



Cockpit Update Manager



ARCWAY AG

Alt Moabit 90b

D-10559 Berlin

Tel. +49.30.8009783-0

Fax +49.30. 8009783-100

E-Mail info@arcway.com

Disclaimer

Please direct questions about ARCWAY Cockpit or comments on this document to:

Customer Support
ARCWAY AG
Alt Moabit 90b
10559 Berlin
+49.30.8009783.333

© 2004 - 2008 ARCWAY AG. All rights reserved. Unpublished - rights reserved under the Copyright Laws of Germany.

THIS PRODUCT CONTAINS CONFIDENTIAL INFORMATION AND TRADE SECRETS OF ARCWAY CORPORATION. USE, DISCLOSURE, AND/OR REPRODUCTION IS PROHIBITED WITHOUT THE PRIOR EXPRESS WRITTEN PERMISSION OF ARCWAY CORPORATION. ACCESS IS LIMITED TO AUTHORIZED USERS. USE OF THIS PRODUCT IS SUBJECT TO THE TERMS AND CONDITIONS OF THE USER'S LICENSE AGREEMENT WITH ARCWAY CORPORATION.

THE CONTENT OF THIS PUBLICATION IS PROVIDED "AS IS" WITHOUT WARRANTY OF ANY KIND, EITHER EXPRESS OR IMPLIED, INCLUDING, BUT NOT LIMITED TO, THE IMPLIED WARRANTIES OF FITNESS FOR A PARTICULAR PURPOSE OR NON-INFRINGEMENT. THIS PUBLICATION COULD INCLUDE INACCURACIES OR TYPOGRAPHICAL ERRORS.

ARCWAY AG reserves the right to revise this publication or withdraw it at any time without prior notice.

ARCWAY and Cockpit are trademarks or registered trademarks of ARCWAY Corporation.

Java is a trademark of Sun Microsystems, Inc.

Eclipse is a trademark of Eclipse Foundation, Inc.

Microsoft, Windows, Windows 2000, Windows XP, Windows 2003 Server MS Word, MS Excel, MS Project are trademarks or registered trademarks of Microsoft Corporation.

MS SQL Server 2000 is a trademark of Microsoft Corporation.

DB2 is a trademark of IBM Corporation.

Linux is a registered trademark of Linus Torvalds.

Fedora is a trademark of Red Hat, Inc.

Mandrake is a trademark of Mandrakesoft S.A.

SUSE is a trademark of SUSE AG, a Novell business.

Adobe SVG Viewer is a trademark of Adobe Systems, Inc.

All other company or product names are trademarks or registered trademarks of their respective owners.

Document 0003-V2-EN last edited on February 27, 2008

Table of Contents

Updating installed Features	5
Installing new Features.....	8
Additional Features.....	13
Use Case Module.....	13
Document Module.....	13
Plantype: UML Sequence Diagram	13
Plantype: FMC Process Diagram (Petri Net)	13



Using the Update Manager

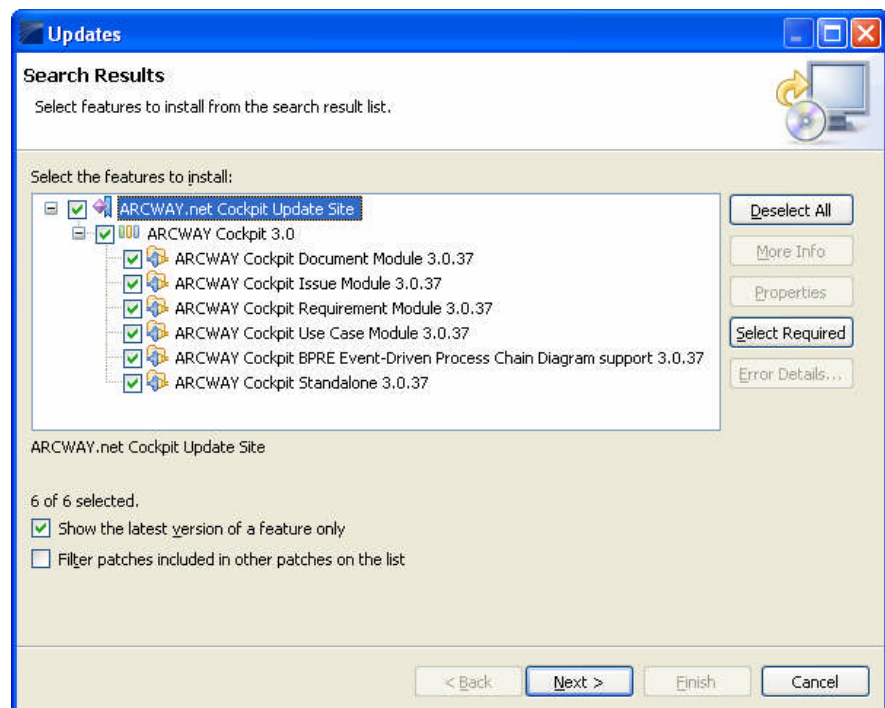
By means of the Update Manager you can perform software updates at regular intervals. It is possible to let **ARCWAY Cockpit** search for updates automatically.

You can also use the Update Manager to install new features or modules that are not contained in the standard installation.

Updating installed Features

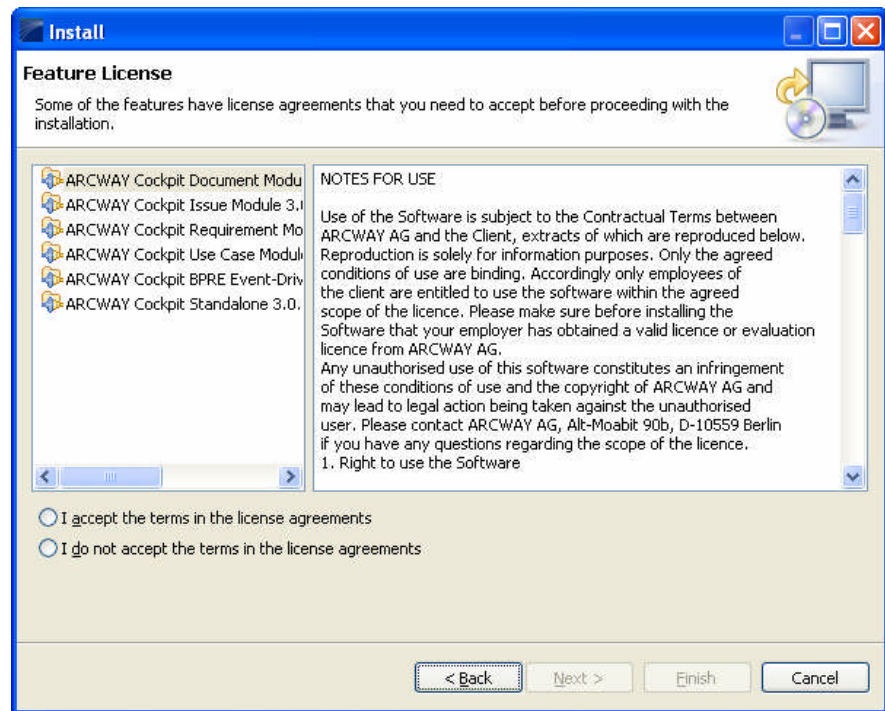
To check to see whether there are updates for a product's existing features (requires internet access):

1. Click **Help > Software Updates > Find and Install...** in the main menu and select **Search for Updates of the currently installed features** in the following dialog. This will contact the Web sites associated with the product's features to discover what versions of those features are available. The potential upgrades are presented in on the next page.

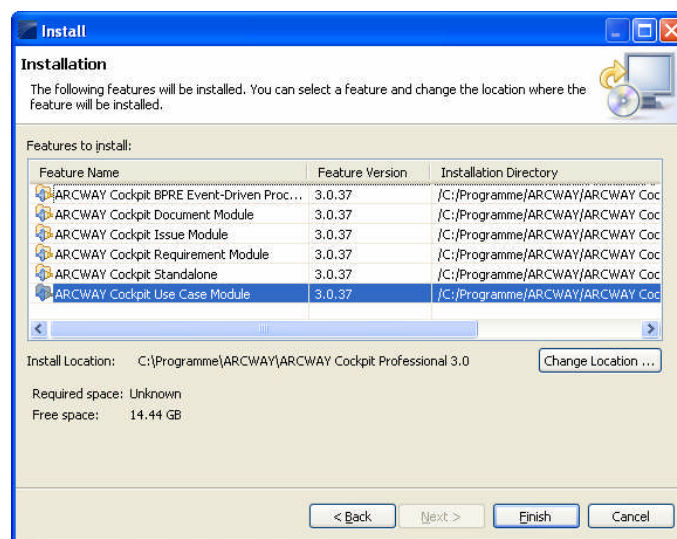


2. Select the feature versions that you wish to upgrade, and click **Next**.

- Carefully review the license agreements for the upgraded features. If the terms of all these licenses are acceptable, check **I accept the terms in the license agreements**. Features with not accepted license agreements can not be installed.



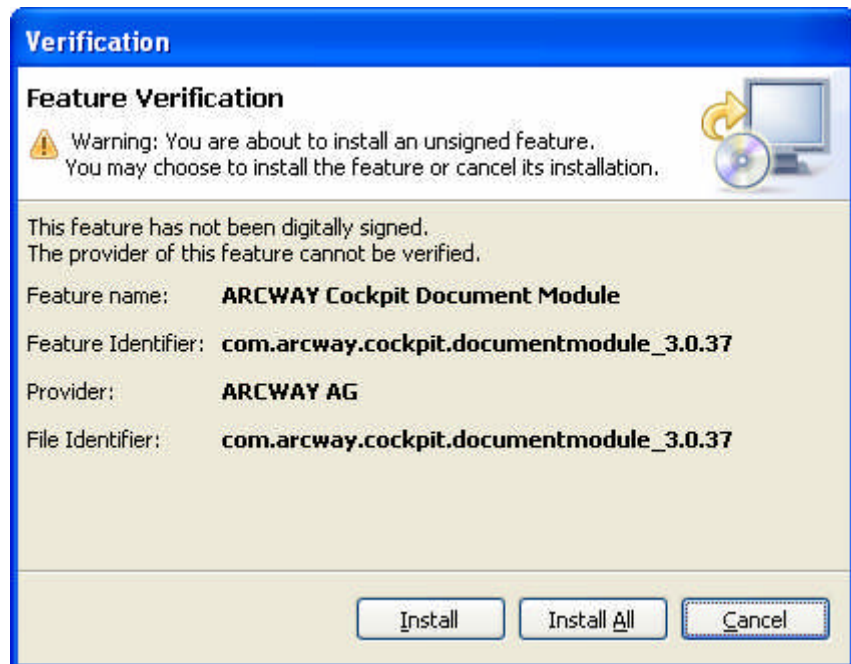
- The Install Location page controls where the new feature's files are to be installed on the local computer. Select the directory into which the product is installed and hit **Next**. (If the product is installed in a directory to which you do not have write access, you should contact your system administrator and get them to install this feature so that it will be generally available. The other option is to click **Add** and point to a directory to which you do have write access.



5. Click **Finish** to allow the downloading and installing to proceed.
6. Feature versions can be digitally signed by the company that provides them. This allows you to verify more easily that the features and plug-ins that are about to be downloaded and installed are coming from a trusted supplier.

Warning: Because of the possibility of harmful or even malicious plug-ins, you should only download features from parties that you trust. Features that have been provided by **ARCWAY** are always trustworthy.

Click **Install** or **Install All** to allow the downloading and installing to proceed.

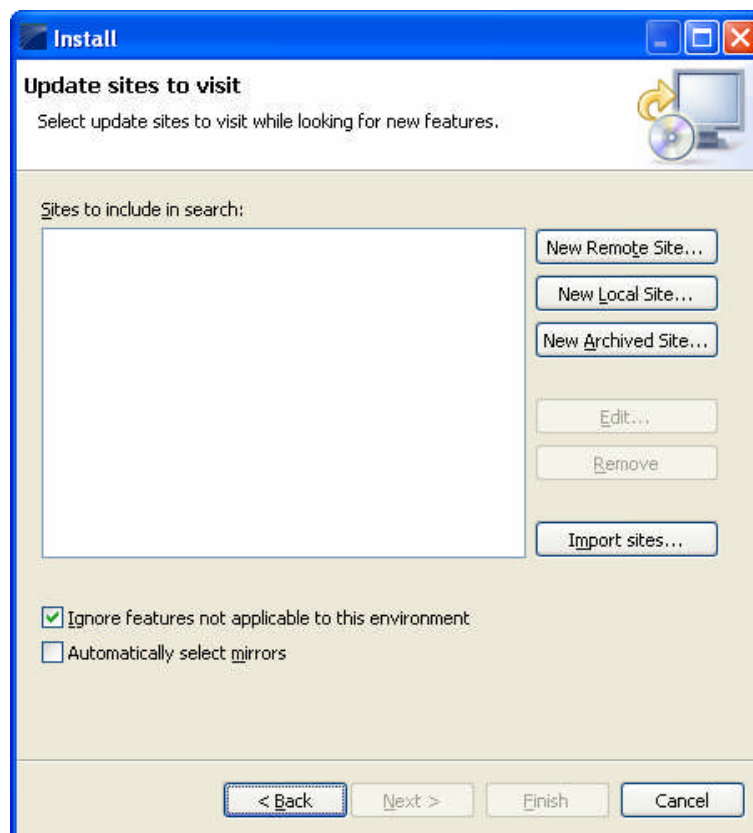


7. Once all the features and plug-ins have been downloaded successfully and their files installed, a new configuration that incorporates these features and plug-ins will be formulated. Click **Yes** when asked to exit and restart the Workbench for the changes to take effect. After restarting you can continue working with your updated version of **ARCWAY Cockpit**.

Installing new Features

To locate and install a new feature into your **Cockpit** (ordinarily requires web access):

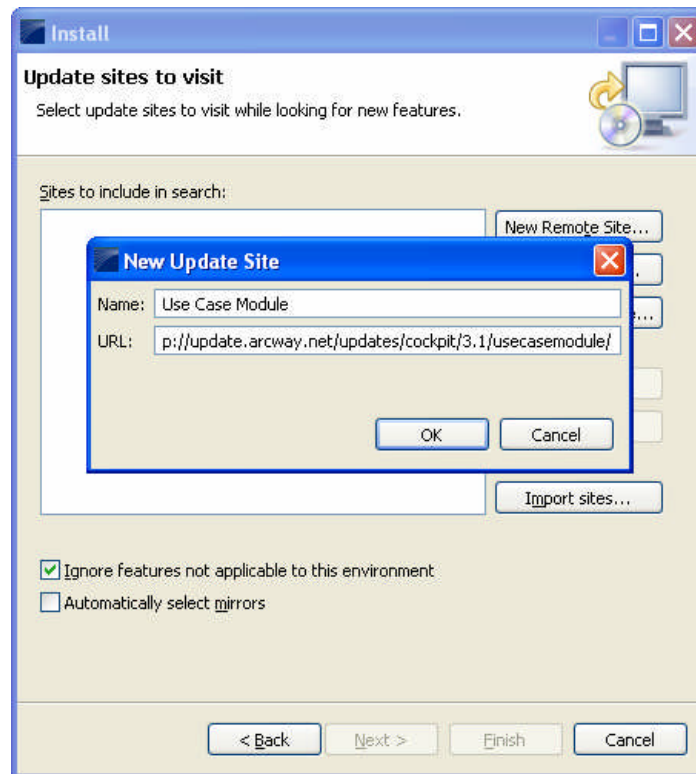
1. Perform an update (see [Updating installed features](#)) to make sure that the new features are compatible with your version of **ARCWAY Cockpit**.
2. Open the Install Wizard by clicking **Help > Software Updates > Find and Install...** in the main menu.
3. Select the second button **Search for new features to install** and click **Next**.
4. Create a bookmark for an update site where **Cockpit** features and plug-ins are published. In the sites to search list, select
 - **New Remote Site** to add a remote site
 - **New Local Site** if the site is available on a local drive (including a CD)
 - **New Archived Site**, when the site is available locally but is packaged as a jar or zip file.



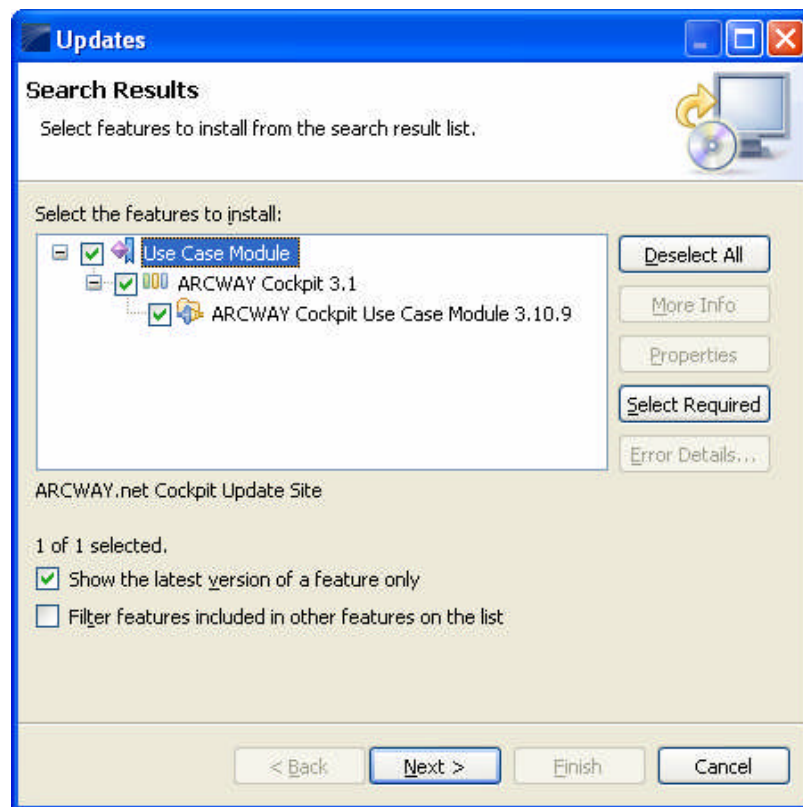
In most cases you will install your new feature from a remote site that has been provided by **ARCWAY**.

You can find a list of all features that are currently provided by us and can be installed using the Update Manager under [Additional Features](#).

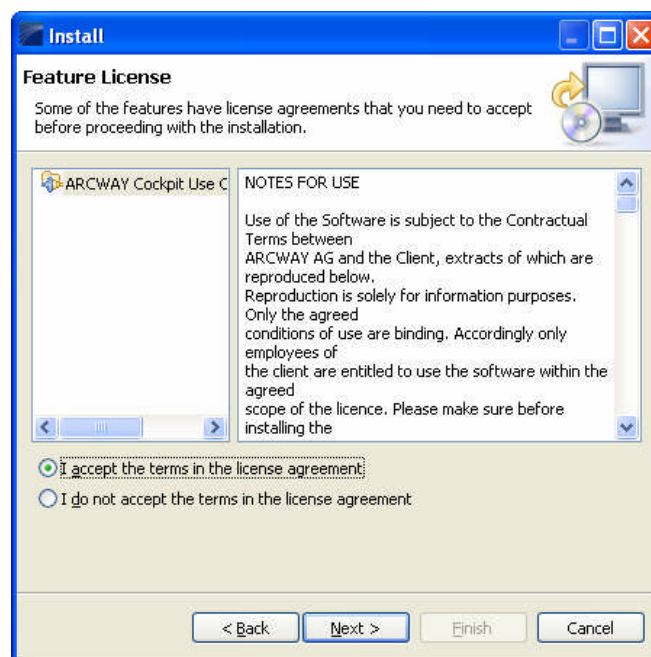
5. In the new update site dialog, give the site a name such as "Use Case Module" and enter the URL or the path to the local site, such as "http://update.arcway.net/updates/cockpit/3.1/usecasemodule/".



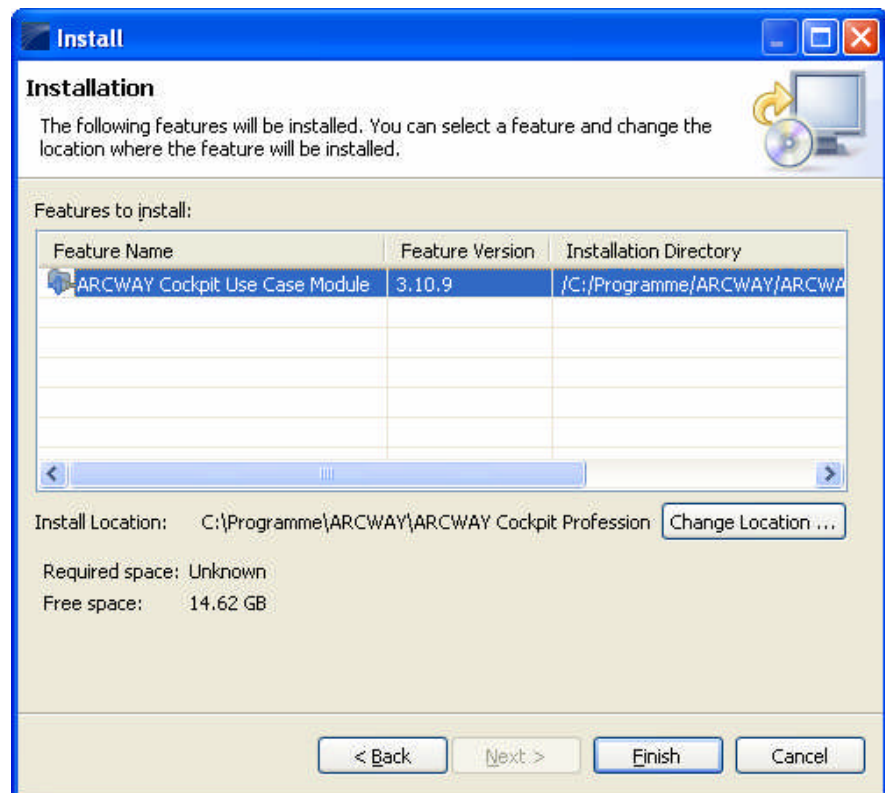
6. After adding the site click **Finish**. This will contact the web site to discover what features are available.
7. Wait for the search to finish and select the features to be added. You can view the description or more detailed properties for any feature by selecting the feature and pressing the **Properties** button.



8. Once you've decided which features to install, click **Next**.
9. Carefully review the license agreements for the features. If the terms of all these licenses are acceptable, check **I accept the terms in the license agreement**. Features with not accepted license agreements can not be installed.

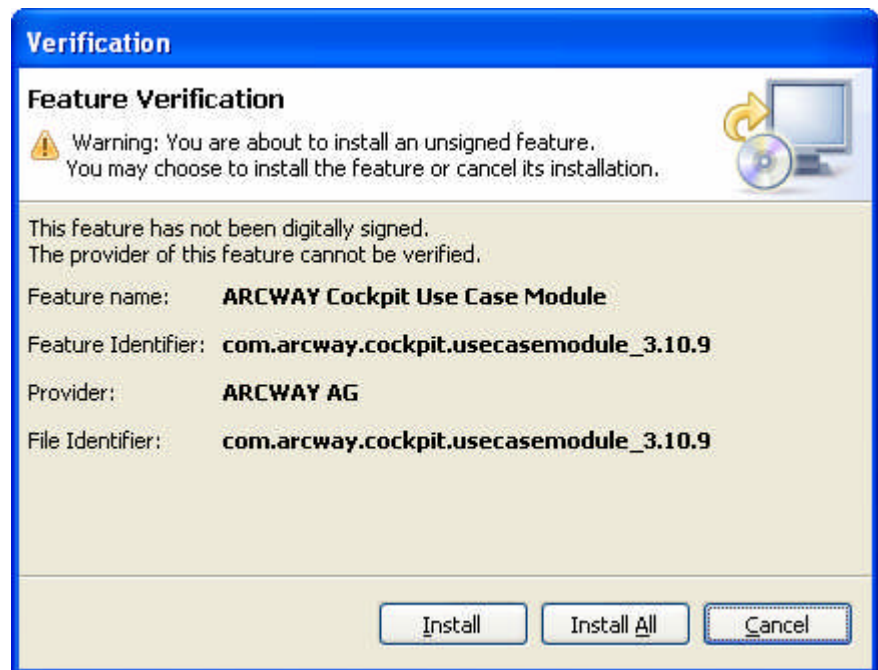


10. If a feature selected for installing includes optional features, a page will show up allowing you to select whether you want them to be installed or not. Optional features typically carry functionality that is not essential for proper functioning of the main feature.
11. The Install Location page controls where the new feature's files are to be installed on the local computer. Select the directory into which the product is installed and hit **Next**. (If the product is installed in a directory to which you do not have write access, you should contact your system administrator and get them to install this feature so that it will be generally available. The other option is to click **Change Location...** and **Add** and point to a directory to which you do have write access.



12. Click **Install** to allow the downloading and installing to proceed.
13. Feature versions can be digitally signed by the company that provides them. This allows you to verify more easily that the features and plug-ins that are about to be downloaded and installed are coming from a trusted supplier.
Warning: Because of the possibility of harmful or even malicious plug-ins, you should only download features from parties that you trust. Features that have been provided by **ARCWAY** are always trustworthy.

Click **Install** to allow the downloading and installing to proceed.



14. Once the new feature and plug-ins have been downloaded successfully and their files installed into the product on the local computer, a new configuration that incorporates these features and plug-ins will be formulated. Click **Yes** when asked to exit and restart the workbench for the changes to take effect.
To add other new features at the same time before restarting, click **No** and repeat. If this was a new feature and can be dynamically installed into the current configuration, you will also be presented with an **Apply Changes** button. This will not restart the platform, but configures the feature and the plug-ins into the current configuration.
15. New features may provide their own perspectives and views. To open a perspective select **Window > Open Perspective** from the main menu and select the name of the perspective. If the perspective is not available select **Other...** and select the perspective from the following dialog. To open a view select **Window > Show View** from the main menu and select the name of the view. Select **Other...** here as well if the view is not available and select the view from the following dialog.

Additional Features

You will find a list of features that you can use to extend your installation of **ARCWAY Cockpit**. Furthermore the URL for the update site for each feature can be found. Contact our support if you want to install a feature that has not been mentioned here.

Use Case Module

The Use Case Module manages textual descriptions of individual steps.

→ Update Site: <http://update.arcway.net/updates/cockpit/3.1/usecasemodule/>

Document Module

The Document Module manages links to documents on the Web or in the file system.

→ Update Site: <http://update.arcway.net/updates/cockpit/3.1/documentmodule/>

Plantype: UML Sequence Diagram

UML Sequence Diagrams show object interactions within a time sequence.

→ Update Site: <http://update.arcway.net/updates/cockpit/3.1/umlsddiagrams/>

Plantype: FMC Process Diagram (Petri Net)

FMC Petrinets model processes in a system.

→ Update Site: <http://update.arcway.net/updates/cockpit/3.1/fmcpndiagrams/>