



A R C W A Y
B R I D G I N G T H E G A P

Cockpit

Client Installation



A R C W A Y
B R I D G I N G T H E G A P

ARCWAY AG

Potsdamer Platz 10
10785 Berlin
GERMANY

Tel. +49 30 8009783-0
Fax +49 30 8009783-100
E-Mail info@arcway.com

DISCLAIMER

Please direct questions about ARCWAY Cockpit or comments on this document to:

Customer Support
ARCWAY AG
Potsdamer Platz 10
10785 Berlin
GERMANY
+49 30 8009783-333

© 2004 - 2012 ARCWAY AG. All rights reserved. Unpublished - rights reserved under the Copyright Laws of Germany.

THIS PRODUCT CONTAINS CONFIDENTIAL INFORMATION AND TRADE SECRETS OF ARCWAY CORPORATION. USE, DISCLOSURE, AND/OR REPRODUCTION IS PROHIBITED WITHOUT THE PRIOR EXPRESS WRITTEN PERMISSION OF ARCWAY CORPORATION. ACCESS IS LIMITED TO AUTHORIZED USERS. USE OF THIS PRODUCT IS SUBJECT TO THE TERMS AND CONDITIONS OF THE USER'S LICENSE AGREEMENT WITH ARCWAY CORPORATION.

THE CONTENT OF THIS PUBLICATION IS PROVIDED "AS IS" WITHOUT WARRANTY OF ANY KIND, EITHER EXPRESS OR IMPLIED, INCLUDING, BUT NOT LIMITED TO, THE IMPLIED WARRANTIES OF FITNESS FOR A PARTICULAR PURPOSE OR NON-INFRINGEMENT. THIS PUBLICATION COULD INCLUDE INACCURACIES OR TYPOGRAPHICAL ERRORS.

ARCWAY AG reserves the right to revise this publication or withdraw it at any time without prior notice.

ARCWAY and Cockpit are trademarks or registered trademarks of ARCWAY Corporation.

Java is a trademark of Sun Microsystems, Inc.

Eclipse is a trademark of Eclipse Foundation, Inc.

Microsoft, Windows, Windows 2000, Windows XP, Windows Vista, Windows 7, Windows 2003 Server, Windows 2008 Server, MS Word, MS Excel, MS Project, MS SQL Server 2000 and MS SQL Server 2005 are trademarks or registered trademarks of Microsoft Corporation.

DB2 is a trademark of IBM Corporation.

Linux is a registered trademark of Linus Torvalds.

Fedora is a trademark of Red Hat, Inc.

Mandrake is a trademark of Mandrakesoft S.A.

SUSE is a trademark of SUSE AG, a Novell business.

Adobe SVG Viewer is a trademark of Adobe Systems, Inc.

All other company or product names are trademarks or registered trademarks of their respective owners.

Document 0003-V3-EN last edited on January 11, 2017

Table of Contents

- System Requirements5
- Installing ARCWAY Cockpit on Windows6
- Language settings7
 - German..... 7
 - Englisch..... 7
 - Example..... 7
- Getting Started8
 - Loading Licenses 8
 - Configuring Servers..... 10



Installation of the Cockpit Client

System Requirements

PROCESSOR	2 GHZ X86 PROCESSOR RECOMMENDED
MEMORY	MINIMUM 512 MB; RECOMMENDED 1 GB
FREE DISK SPACE	500 MB (200 MB FOR THE PROGRAM INSTALLATION)
SCREEN RESOLUTION	MINIMUM 1024 X 768; RECOMMENDED 1280 X 1024
PLATTFORM	SUPPORTED PLATFORMS: WINDOWS XP AND WINDOWS VISTA, WINDOWS 7; OTHER PLATFORMS (LINUX, MACOS) ON REQUEST
SOFTWARE	REQUIRED FOR EXPORT/IMPORT TO MS OFFICE: <ul style="list-style-type: none"> ▪ MICROSOFT EXCEL 2003 OR LATER ▪ MICROSOFT WORD 2003 OR LATER

Installing ARWAY Cockpit on Windows

You can install the client either as system administrator or as ordinary user. If you install it as a system administrator, the client will be installed for all users. If you install it as an ordinary user, the client will only be installed for that user.

If you received **ARWAY Cockpit** via Download-Link: To install **ARWAY Cockpit** client, download the **ARWAY Cockpit** client installer with your download link and execute the setup program.

The installer will ask you for the destination directory. First of all choose the features to be installed (see Fig. 1).

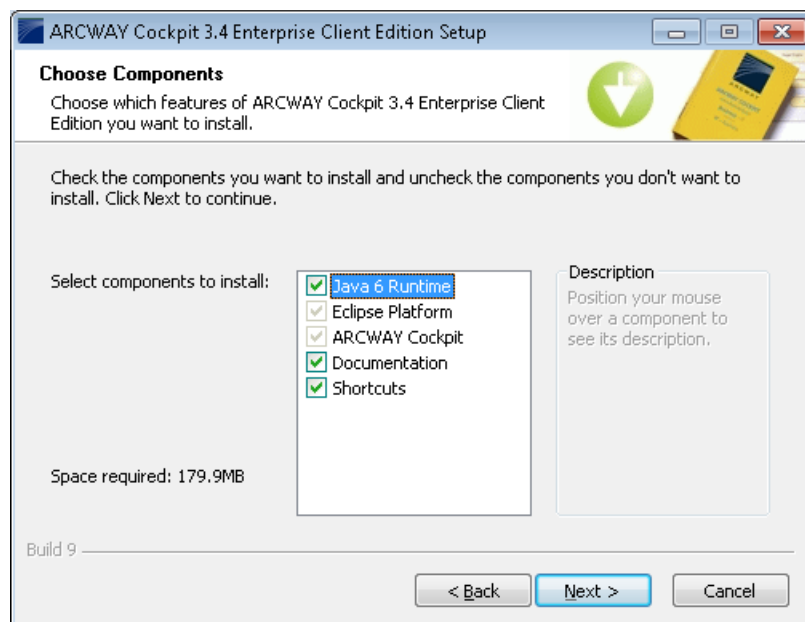


Fig. 1: Features

The Java Runtime Environment is only used by the **ARWAY Cockpit** client itself and therefore no conflicts with already installed Java Versions should appear. The installer will also create a program group and a desktop icon for **ARWAY Cockpit** client.

After the installation has completed, start the **ARWAY Cockpit** client by double-clicking the **ARWAY Cockpit** icon on your desktop.

Language settings

ARCWAY Cockpit can be started in english or german. By default Cockpit will be started in german on a german operating system and in english in any other cases. To explicitly specify the language in which Cockpit should be started you have to modify the `ARCWAY_Cockpit.ini` file which can be found in the root folder of your Cockpit installation.

German

Please add the following lines before the `-vmargs` line:

```
-nl  
de_DE
```

Englisch

Please add the following lines before the `-vmargs` line:

```
-nl  
en
```

Example

The following is an example of how an `ARCWAY_Cockpit.ini` would look like with german set (do not copy it since some lines are truncated and might be customized for unique system settings):

```
-nl  
-de_DE  
-startup  
plugins/org.eclipse.equinox.launcher_1.3.0.v20120522-1813.jar  
-launcher.library  
plugins/org.eclipse.equinox.launcher.win32.win32.x86_1.1.200.v20120522-1813  
-launcher.XXMaxPermSize  
256m  
-vmargs  
-DentityExpansionLimit=10000000  
-Declipse.p2.data.area=@user.dir/p2  
-Xms64m  
-Xmx768m  
-Dosgi.configuration.area=@user.home/AppData/Local/ARCWAY/conf/350SA22_...  
-Dosgi.instance.area=@user.home/AppData/Roaming/ARCWAY/Cockpit350SA
```

Getting Started

Load your license file to start working with **ARCWAY Cockpit** after finishing the installation. Have a look at the chapter on **Loading Licenses** for this purpose.

For Enterprise Edition clients it is required to set the server properties. Read the the chapter on **Configuring Server** for more information.

Loading Licenses

ARCWAY Cockpit Licenses are lyable for costs.

Once the licenses are purchased, these can be requested via email: license@arcway.com.

Depending on the type of purchased or desired license additional information, such as the Windows username or pc identification, must be specified.

The information required for client licenses can be found in **ARCWAY Cockpit**. Please note that the name of currently logged in operating system user affects this information. Hence it is necessary that **ARCWAY Cockpit** is run using the licensee's operating system user.

To view the information open the preferences dialog with the help of the main menu entry `Window > Preferences`. Now open the page for license settings. The page will show all the information you may need for requesting your license file (see Fig. 2).

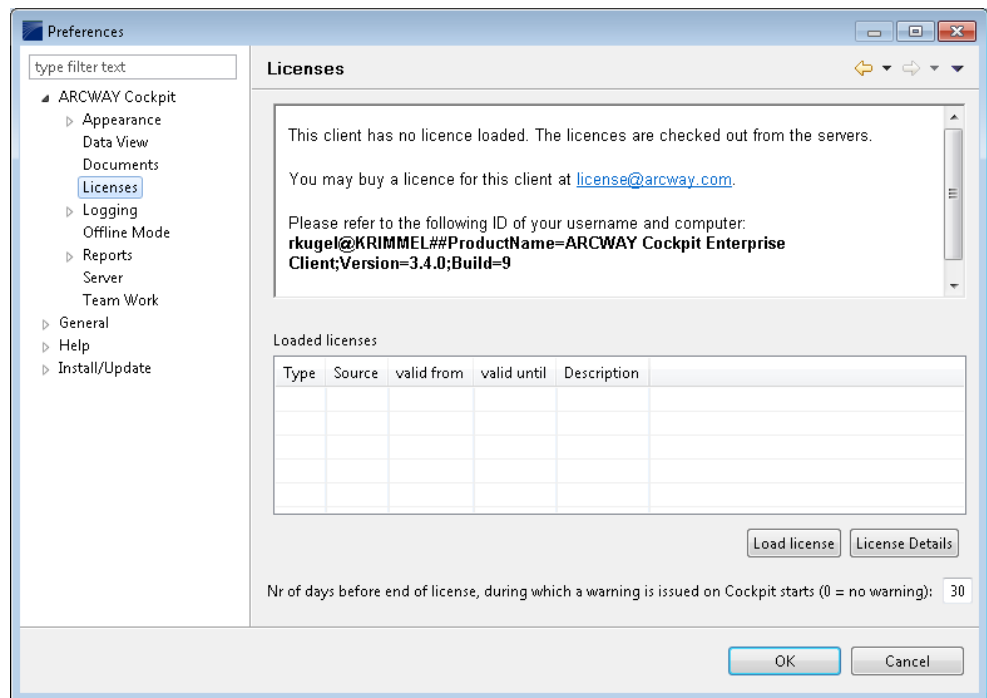


Fig. 2 Preferences, Licenses Dialog

The same dialog allows for loading your license. Use the button `Load license` for this purpose.

If you haven't purchased licenses yet or wish to purchase further licenses, please refer to sales@arcway.com or give us a call: 0049 30 8009783-0.

Configuring Servers¹

When you run **ARCWAY Cockpit** client for the first time, there are no servers configured. First you have to configure the server connection for this client. For creating a connection to a server click on the button “New Server Connection” within the **Project Navigator** view. A dialog opens (see .Fig. 3). You can choose any server name. The URL should be the URL where the **Cockpit** Server is located. If you don’t know the URL of the server, please ask the system administrator who installed the server. Repeat the last steps for each server you want to configure.

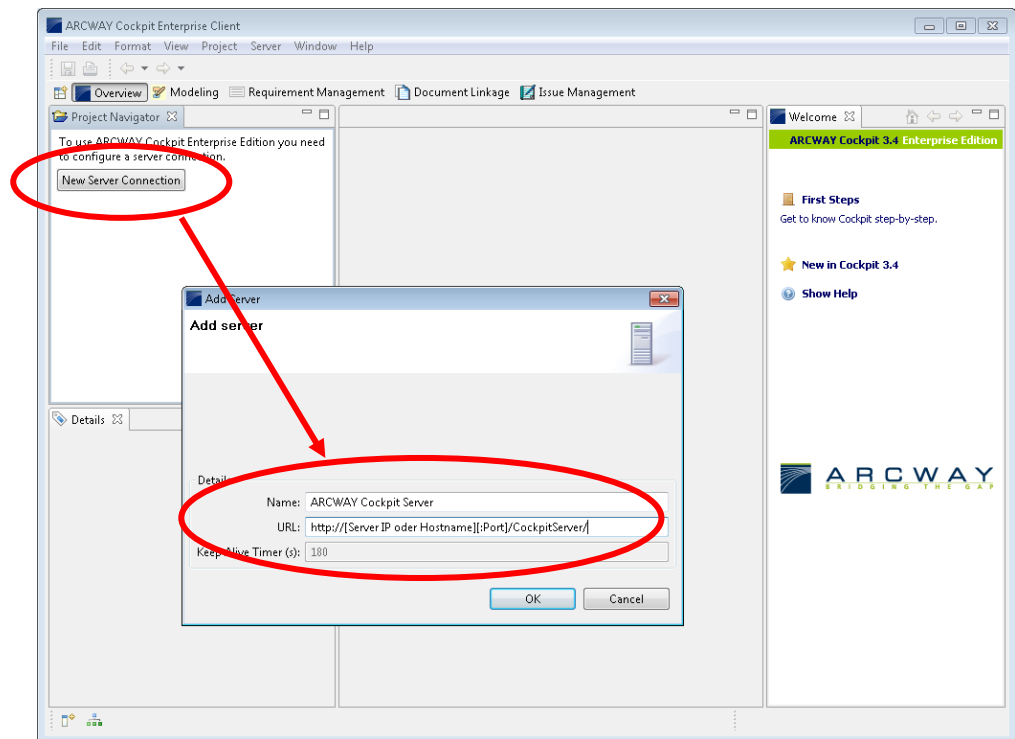


Fig. 3 Create server connection

¹ This step is only required in the Enterprise Edition of **ARCWAY COCKPIT**