



Cockpit 3.6

Update Manager



A R C W A Y
B R I D G I N G T H E G A P

ARCWAY AG

Potsdamer Platz 10

10785 Berlin

GERMANY

Tel. +49 30 8009783-0

Fax +49 30 8009783-100

E-Mail info@arcway.com

Disclaimer

Please direct questions about ARCWAY Cockpit or comments on this document to:

Customer Support
ARCWAY AG
Potsdamer Platz 10
10785 Berlin
GERMANY
+49 30 8009783-333

© 2004 - 2012 ARCWAY AG. All rights reserved. Unpublished - rights reserved under the Copyright Laws of Germany.

THIS PRODUCT CONTAINS CONFIDENTIAL INFORMATION AND TRADE SECRETS OF ARCWAY CORPORATION. USE, DISCLOSURE, AND/OR REPRODUCTION IS PROHIBITED WITHOUT THE PRIOR EXPRESS WRITTEN PERMISSION OF ARCWAY CORPORATION. ACCESS IS LIMITED TO AUTHORIZED USERS. USE OF THIS PRODUCT IS SUBJECT TO THE TERMS AND CONDITIONS OF THE USER'S LICENSE AGREEMENT WITH ARCWAY CORPORATION.

THE CONTENT OF THIS PUBLICATION IS PROVIDED "AS IS" WITHOUT WARRANTY OF ANY KIND, EITHER EXPRESS OR IMPLIED, INCLUDING, BUT NOT LIMITED TO, THE IMPLIED WARRANTIES OF FITNESS FOR A PARTICULAR PURPOSE OR NON-INFRINGEMENT. THIS PUBLICATION COULD INCLUDE INACCURACIES OR TYPOGRAPHICAL ERRORS.

ARCWAY AG reserves the right to revise this publication or withdraw it at any time without prior notice.

ARCWAY and Cockpit are trademarks or registered trademarks of ARCWAY Corporation.

Java is a trademark of Sun Microsystems, Inc.

Eclipse is a trademark of Eclipse Foundation, Inc.

Microsoft, Windows, Windows 2000, Windows XP, Windows Vista, Windows 7, Windows 2003 Server, Windows 2008 Server, MS Word, MS Excel, MS Project, MS SQL Server 2000 and MS SQL Server 2005 are trademarks or registered trademarks of Microsoft Corporation.

DB2 is a trademark of IBM Corporation.

Linux is a registered trademark of Linus Torvalds.

Fedora is a trademark of Red Hat, Inc.

Mandrake is a trademark of Mandrakesoft S.A.

SUSE is a trademark of SUSE AG, a Novell business.

Adobe SVG Viewer is a trademark of Adobe Systems, Inc.

All other company or product names are trademarks or registered trademarks of their respective owners.

Document 0003-V3-EN last edited on January 11, 2017

Table of Contents

Updating installed Features	5
Installing new Features.....	9



Using the Update Manager

By means of the Update Manager you can perform software updates at regular intervals. It is possible to let **ARCWAY Cockpit** search for updates automatically.

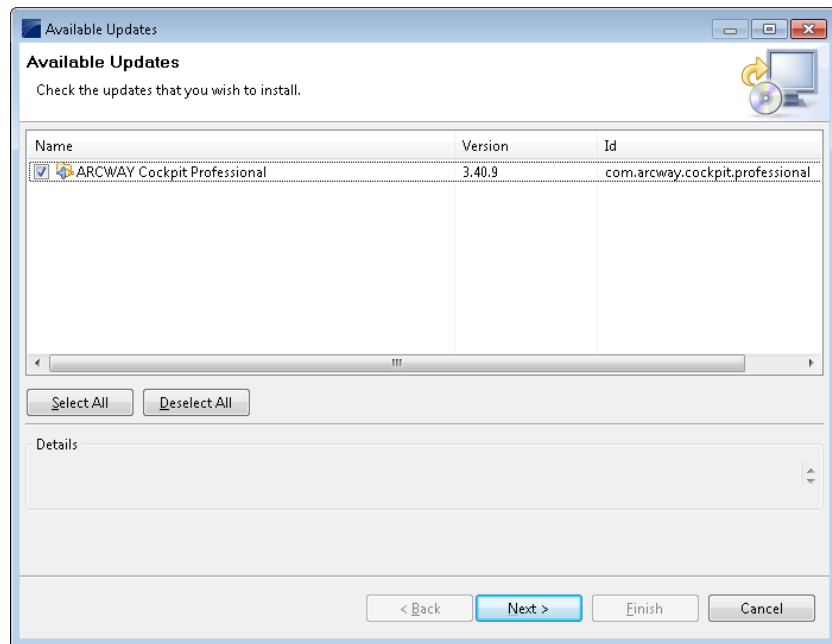
You can also use the Update Manager to install new features or modules that are not contained in the standard installation.

Updating installed Features

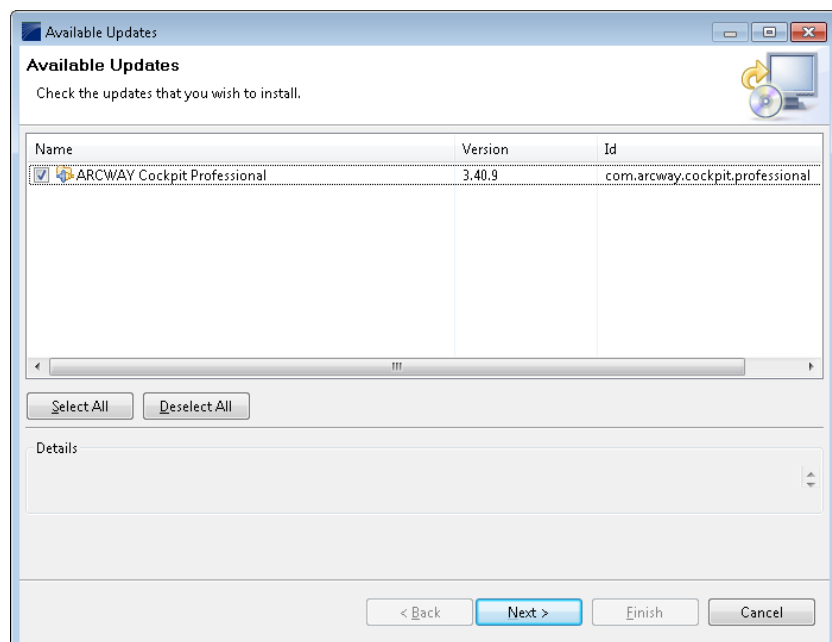
To check to see whether there are updates for a product's installed features you need to complete the following steps (ordinarily requires internet access¹):

1. Click **Help > Check for Updates** in the main menu. This will contact the update repositories associated with the product's features as well as the connected cockpit servers to discover what versions of those features are available. The potential updates are presented in on the next page.

¹ The Professional Edition of **ARCWAY Cockpit** uses the **ARCWAY** Update Server located in the internet as source for updates. Hence a working internet connection is required. This may afford a review of the **ARCWAY Cockpit** HTTP-Proxy Settings if Internet access requires the use of a proxy server (See **General/Network Connections** in the **Preferences** Dialog). The Enterprise Edition of **ARCWAY Cockpit** does also use the Cockpit Server as source for client updates. The connection to the Cockpit Server must be established.

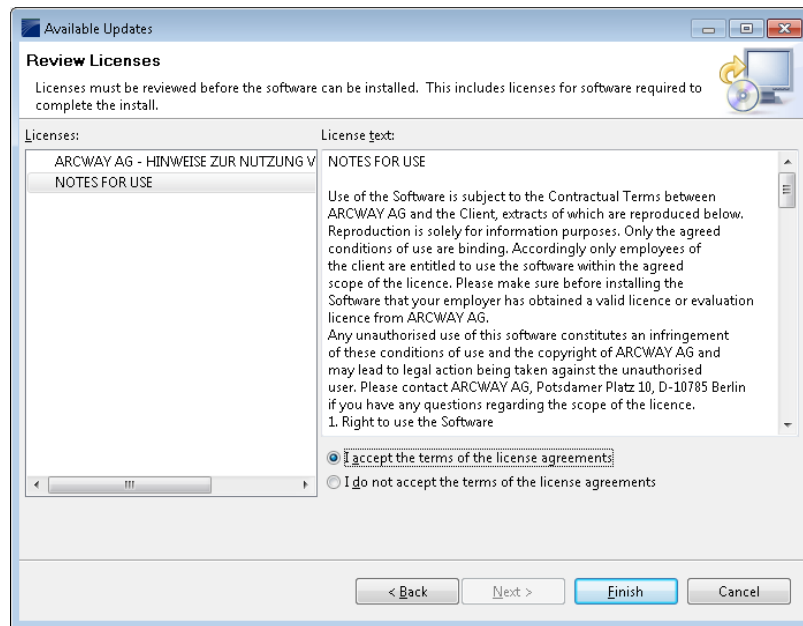


2. Select the feature versions that you wish to upgrade, and click **Next**. Please note that not every mix of features in arbitrary versions results in a working configuration. Hence it is usually required (and recommended) to install all of the proposed updates.
3. After that a confirmation Dialog will be shown. It lists the selected features and indicates potential problems that may exist after applying the selected updates:

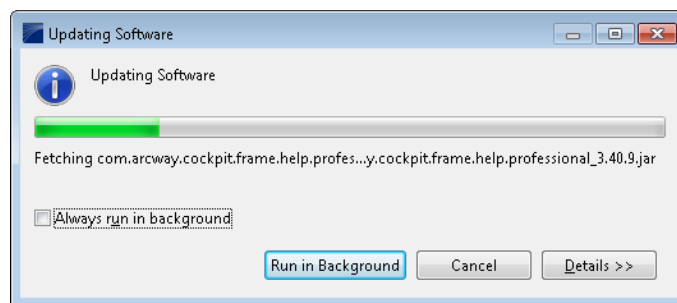


Confirm the updates by clicking **Next**.

4. Carefully review the license agreements for the updated features. If the terms of all these licenses are acceptable, check **I accept the terms in the license agreements**. Features with not accepted license agreements can not be installed.

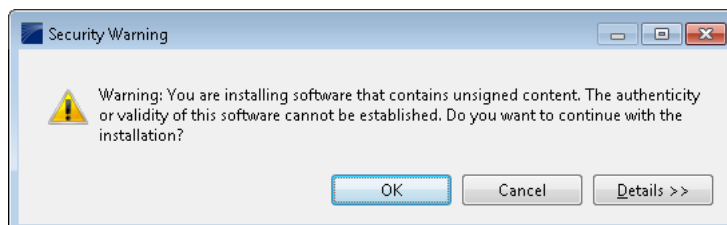


5. Click **Finish** to allow the downloading and installing to proceed. A progress dialog will be shown:



6. Feature versions can be digitally signed by the company that provides them. This allows you to verify more easily that the features and plug-ins that are about to be downloaded and installed are coming from a trusted supplier.

Warning: Because of the possibility of harmful or even malicious plug-ins, you should only download features from parties that you trust. Features that are digitally signed by **ARCWAY** are always trustworthy.



Click **OK** to allow the downloading and installing to proceed.

7. Once all the features and plug-ins have been downloaded successfully and their files installed, a new configuration that incorporates these features and plug-ins will be formulated. Click **Yes** when asked to exit and restart the Workbench for the changes to take effect. After restarting you can continue working with your updated version of **ARCWAY Cockpit**.

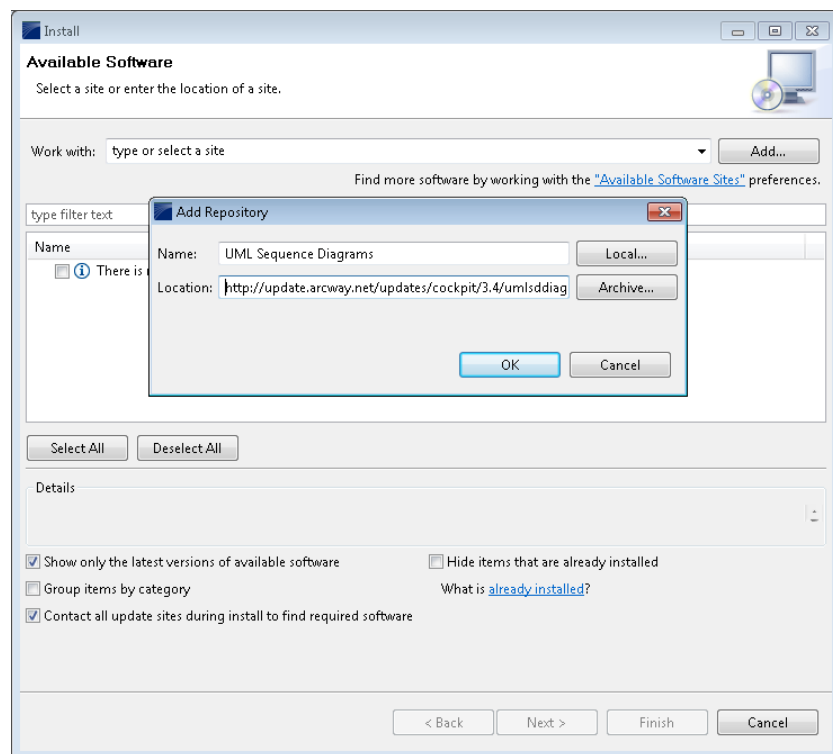
Installing new Features

To locate and install a new feature into your **Cockpit** you need to complete the following steps (ordinarily requires internet access):

1. Perform an update (see [Updating installed features](#)) to make sure that the new features are compatible with your version of **ARCWAY Cockpit**.
2. Open the Install Wizard by clicking **Help > Install New Software...** in the main menu.

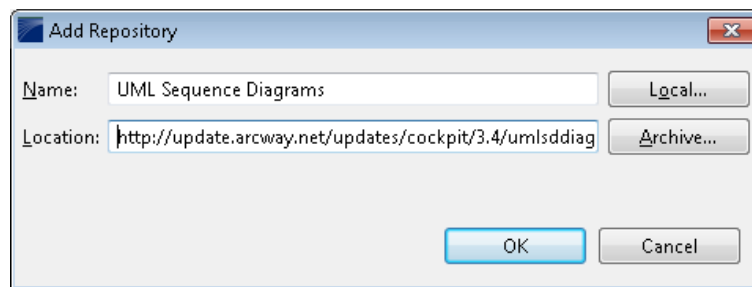
Next you will need to quote the **Repository** that contains the software packages which you want to install. A **Repository** can be located in different places: a archive file, a directory or a network location reachable via a URL.

You will typically need complement the list of **Repositories** known to Cockpit by the the one that contains the new features that shall be installed. You need to press **Add...** in order to do so:

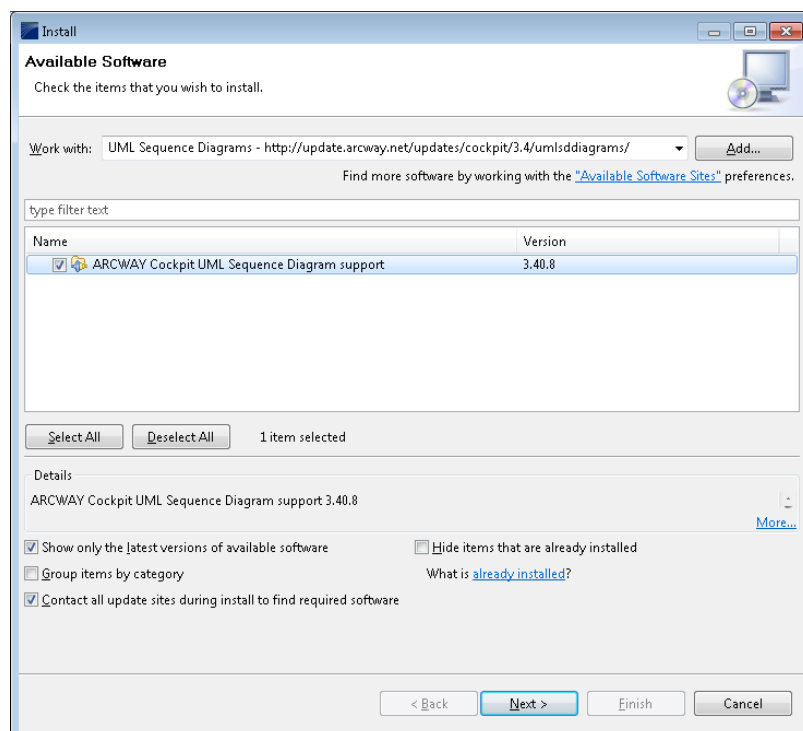


In most cases you will install your new feature from a remote site that has been provided by **ARCWAY**.

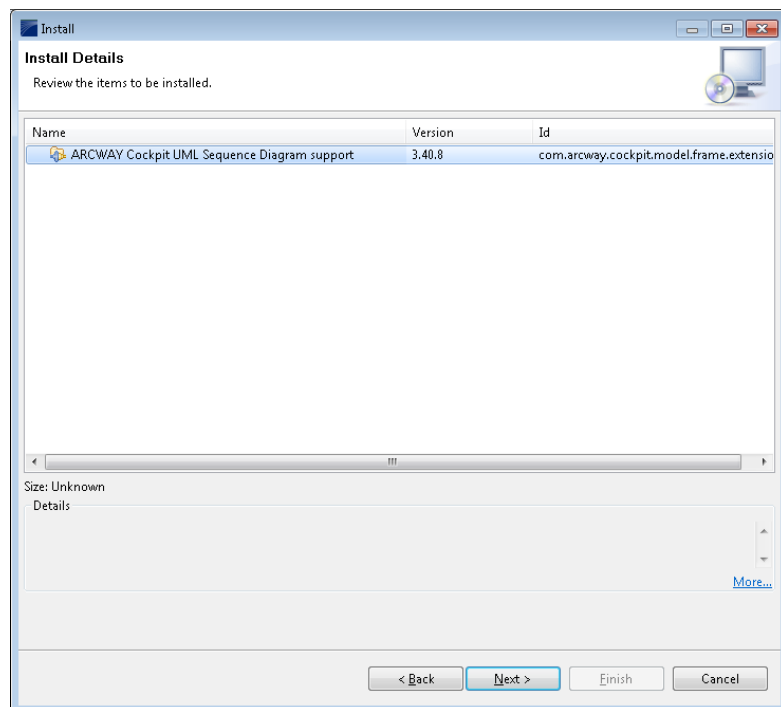
3. In the **Add Repository** dialog give the Repository a name such as "XYZ Module" and enter the URL or the path to the Repository, such as "http://update.arcway.net/updates/cockpit/3.5/xyzmodule/".



- The newly added Repository should be automatically selected in the **Work with:** drop down list and the software packages contained should be listed in the list of available Software packages:



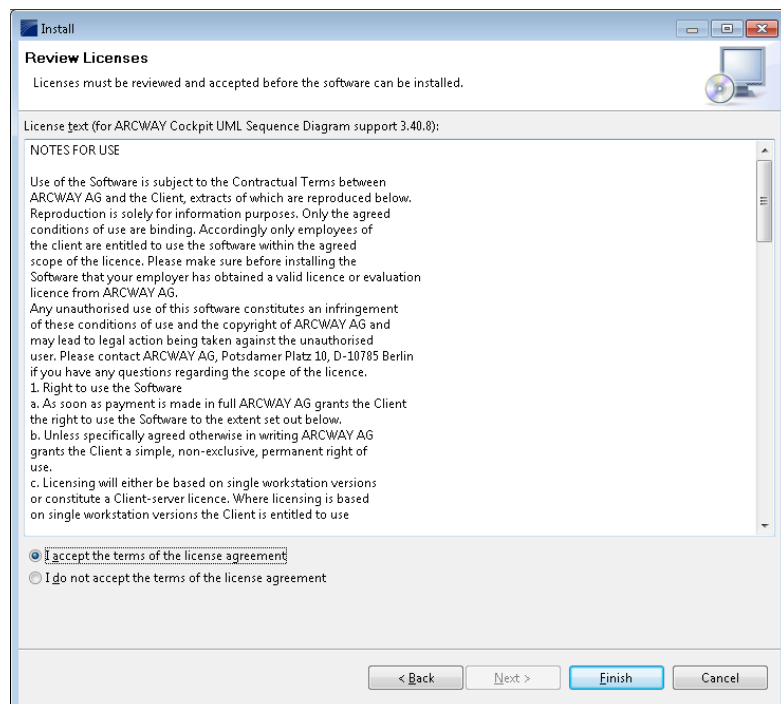
- Select the features that you want to install. You can view the details for any feature by selecting it in the list.
- Once you've decided which features to install make sure you checked them and click **Next**.
- After that a confirmation Dialog will be shown. It lists the selected features and indicates potential problems that may exist after installing the selected features:



Confirm your choice by clicking **Next**.

8. Carefully review the license agreements for the features. If the terms of all these licenses are acceptable, check **I accept the terms in the license agreement**.

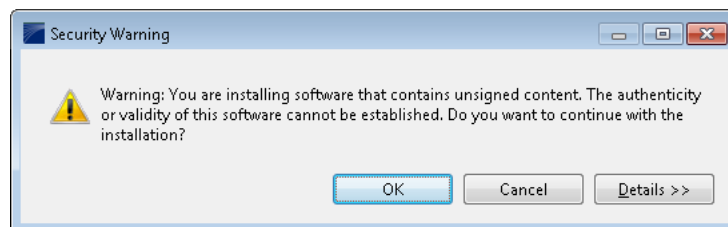
Features with not accepted license agreements can not be installed.



9. Click **Finish** to allow the downloading and installing to proceed.

10. Feature versions can be digitally signed by the company that provides them. This allows you to verify more easily that the features and plug-ins that are about to be downloaded and installed are coming from a trusted supplier.

Warning: Because of the possibility of harmful or even malicious plug-ins, you should only download features from parties that you trust. Features that are digitally signed by **ARCWAY** are always trustworthy.



Click **OK** to allow the downloading and installing to proceed.

11. Once the new feature and plug-ins have been downloaded successfully and their files installed into the product on the local computer, a new configuration that incorporates these features and plug-ins will be formulated. Click **Yes** when asked to exit and restart the workbench for the changes to take effect. To add other new features at the same time before restarting, click **No** and repeat.
12. New features may provide their own perspectives and views. These will not get activated automatically but need to be opened manually. To open a perspective select **Window > Open Perspective** from the main menu and select the name of the perspective. If the perspective is not available select **Other...** and select the perspective from the following dialog. To open a view select **Window > Show View** from the main menu and select the name of the view. Select **Other...** here as well if the view is not available and select the view from the following dialog.