



ARCWAY
BRIDGING THE GAP

ARCWAY AG

Client Installation



English

16.12.2022

ARCWAY AG

Potsdamer Platz 10

10785 Berlin

GERMANY

+49 30 800 97 83 0 (Phone)

+49 30 800 97 83 111 (Fax)

info@arcway.com

Chairman: Karsten Wulfes

Chairman of the Supervisory Board: Uwe Barchmann

Document: AC.001.EN-1602*

16.12.2022

This document is created with [ARCWAY Cockpit](#).

© 2004 - 2022 [ARCWAY AG](#). All rights reserved.

THIS PRODUCT CONTAINS CONFIDENTIAL INFORMATION AND BUSINESS SECRETS OF [ARCWAY AG](#). THE USE, DISTRIBUTION AND/OR REPRODUCTION IS PROHIBITED WITHOUT THE PRIOR AND EXPRESS PERMISSION OF [ARCWAY AG](#).

ACCESS IS LIMITED TO AUTHORIZED PERSONS.

THE TERMS OF USE OF THIS PRODUCT ARE SET FORTH IN THE TERMS OF THE USER LICENSE AGREEMENT WITH [ARCWAY AG](#).

THE CONTENT OF THIS DOCUMENT IS PROVIDED WITHOUT WARRANTY OF ANY KIND. THIS PUBLICATION MAY CONTAIN INACCURACIES AND TYPOGRAPHICAL ERRORS.

[ARCWAY AG](#) reserves the right to change or remove this document without prior notice.

[ARCWAY AG](#) and [ARCWAY Cockpit](#) are trademarks or registered trademarks of [ARCWAY AG](#).

Java is a trademark or registered trademark of Sun Microsystems, Inc.

Eclipse is a trademark or registered trademark of Eclipse Foundation, Inc.

Microsoft Windows 8.1, Windows 10, Windows Server 2012, Windows Server 2016, Windows Server 2019, MS Word, MS Excel, MS Project, MS SQL Server 2012, MS SQL Server 2014 and MS SQL Server 2017 are trademarks or registered trademarks of Microsoft Corporation.

DB2 is a trademark or registered trademark of IBM Corporation.

Linux is a registered trademark of Linus Torvalds.

Fedora is a trademark or registered trademark of Red Hat, Inc.

SUSE is a trademark or registered trademark of Marcel BidCo GmbH.

Adobe SVG Viewer is a trademark or registered trademark of Adobe Systems.

All brand and product names mentioned in this document are the property of their respective owners.

LIST OF CONTENTS

1	SYSTEM REQUIREMENTS.....	1
2	ARCWAY COCKPIT AUF WINDOWS INSTALLIEREN.....	3
3	ARCWAY COCKPIT AUF MAC INSTALLIEREN	5
4	EXTENDED LANGUAGE SETTING.....	7
4.1	German	7
4.2	English.....	7
4.3	Example	7
5	COMMISSIONING	9
5.1	Load Licenses	9
5.2	Setting up the server connection (Enterprise Edition only).....	10

LIST OF FIGURES

Figure 1: Systemvoraussetzungen ARCWAY Cockpit Enterprise Client.....	1
Figure 2: Installable Components	3
Figure 3: Setup MAC	5
Figure 4: User defaults	10
Figure 5: New Serverconnection	11
Figure 6: Add Server	11

1 SYSTEM REQUIREMENTS

The operation of **ARCWAY Cockpit** does not require above-average system requirements. The following table shows the most important parameters.

Systemvoraussetzungen ARCWAY Cockpit Enterprise Client

Systemvoraussetzungen ARCWAY Cockpit Enterprise Client	
Prozessor	x86-Prozessor mit 2 GHz Takt empfohlen
Arbeitsspeicher	Mindestens 1 GB
Festplattenplatz	Mehr als 500 MB (davon 200 MB für die Installation)
Bildschirmauflösung	Mindestens 1024 x 768, empfohlen 1920 x 1080 oder höher
Plattform	Unterstützt werden Windows 8.1, Windows 10, Windows 11, Mac OS X 10.13 oder höher, Linux auf Anfrage
Software	<p>WINDOWS</p> <p>für Export/Import benötigt:</p> <ul style="list-style-type: none"> * Microsoft Excel 2013 oder höher * Microsoft Word 2013 oder höher <p>MAC</p> <p>Java 8 oder höher (64 Bit). Für Export/Import benötigt:</p> <ul style="list-style-type: none"> * OpenOffice.org für Mac * Microsoft Word 2013 oder neuer für Mac
Serveranbindung (nur bei Enterprise Edition)	<p>Die Clients müssen den Server entweder direkt oder über eine geeignete Netzwerkinfrastruktur erreichen können:</p> <p>Die Kommunikation zwischen den Clients und dem Server erfolgt je nach Serverkonfiguration entweder über das "http"- oder das "https"-Protokoll. Der TCP Port auf dem der Server seine Dienste via "http"- oder "https"-Protokoll anbietet, kann frei konfiguriert werden. Bei einer Standardinstallation ist der Server auf TCP-Port 8080 erreichbar und ist für die Kommunikation über das "http"-Protokoll eingerichtet.</p>

Figure 1: Systemvoraussetzungen ARCWAY Cockpit Enterprise Client

2 ARCWAY COCKPIT AUF WINDOWS INSTALLIEREN

You can install the Software either as system administrator or as ordinary user. If you install it as a system administrator, the client will be installed for all users. If you install it as an ordinary user, the client will only be installed for that user.

If you received [ARCWAY Cockpit](#) via Download-Link: To install [ARCWAY Cockpit](#) client, download the [ARCWAY Cockpit](#) client installer with your download link and execute the setup program.

The installer will ask you for the destination directory. First, choose the features to be installed.

Installable Components

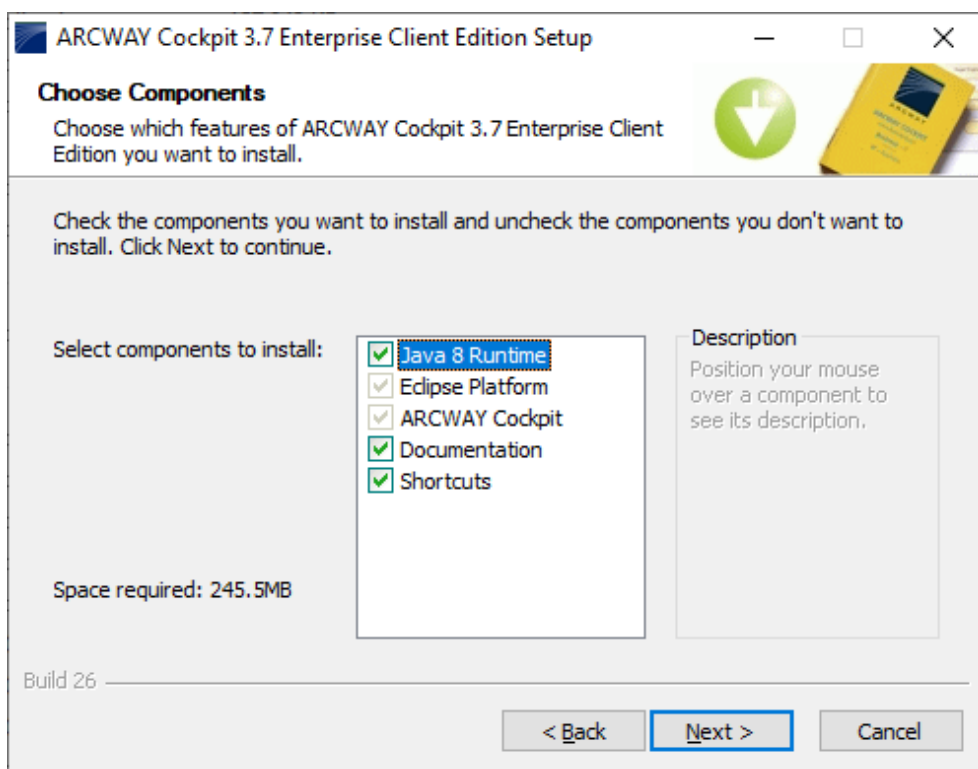


Figure 2: Installable Components

The Java Runtime Environment is only used by the [ARCWAY Cockpit](#) client itself and therefore no conflicts with already installed Java Versions should appear. The installer will also create a program group and a desktop icon for [ARCWAY Cockpit](#) client.

After the installation has completed, start the [ARCWAY Cockpit](#) client by double-clicking the [ARCWAY Cockpit](#) icon on your desktop.



3 ARCWAY COCKPIT AUF MAC INSTALLIEREN

Similar to the installation under Windows, a setup for the installation of **ARCWAY Cockpit** is available for Mac OS. Run this installation package and follow the instructions.

Setup MAC

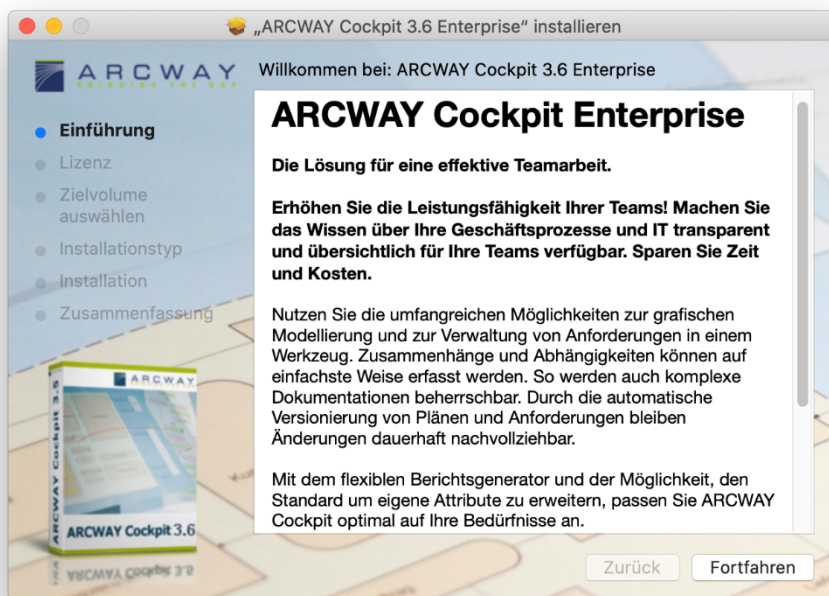


Figure 3: Setup MAC

Please note that the Setup for Mac OS does not include a Java Runtime Environment. Therefore, please make sure that an appropriate environment is installed.

We strongly recommend not to install a simple Java Runtime Environment, but a Java Development Kit (JDK).

As a special recommendation, version 8.132 should be used.

4 EXTENDED LANGUAGE SETTING

ARCWAY Cockpit can be started in English or German. By default Cockpit will be started in German on a German operating system and in English in any other cases. To explicitly specify the language in which Cockpit should be started you have to modify the **ARCWAY_Cockpit.ini** file which can be found in the root folder of your ARCWAY Cockpit installation.

4.1 German

Please add the following lines before the `-vmargs` line:

```
-nl  
de_DE
```

4.2 English

Please add the following lines before the `-vmargs` line:

```
-nl  
en
```

4.3 Example

The entire **ARCWAY_Cockpit.ini** file will look something like this:

```
-nl  
de_DE  
-startup  
plugins/org.eclipse.equinox.launcher...  
-launcher.library  
plugins/org.eclipse.equinox.launcher...  
-launcher.XXMaxPermSize  
256m  
-vmargs  
-DentityExpansionLimit=10000000  
-Declipse.p2.data.area=@user.dir/p2  
-Xms64m
```

```
-Xmx768m  
-Dosgi.configuration.area=@user.home/AppData/...  
-Dosgi.instance.area=@user.home/AppData/...
```

Please do not simply copy the contents of this example, as some lines are cut off and may be specifically adapted to your specific system settings.

5 COMMISSIONING

Load your license file to start working with **ARCWAY Cockpit** after finishing the installation. Have a look at the chapter [Load Licenses](#) (S. 9) for this purpose.

For Enterprise Edition clients it is required to set the server properties. Read the chapter [Setting up the server connection \(Enterprise Edition only\)](#) (S. 10) for more information.

5.1 Load Licenses

Please note that **ARCWAY Cockpit** licenses are subject to a fee.

Once the licenses are purchased, these can be requested via email: license@arcway.com (if you have not yet received it).

Depending on the type of purchased or desired license additional information, such as the Windows username or pc identification, must be specified.

The information required for client licences for your computer can also be viewed in **ARCWAY Cockpit**. For this purpose, it is necessary to start the client under the operating system identification of the later Cockpit user, since the name of the logged on operating system user is included in the displayed information.

Open the user settings dialogue with the help of the menu item **Window » Preferences**.

Now Open the page **Licenses**. This page shows you all the information you need to request your license.

User defaults

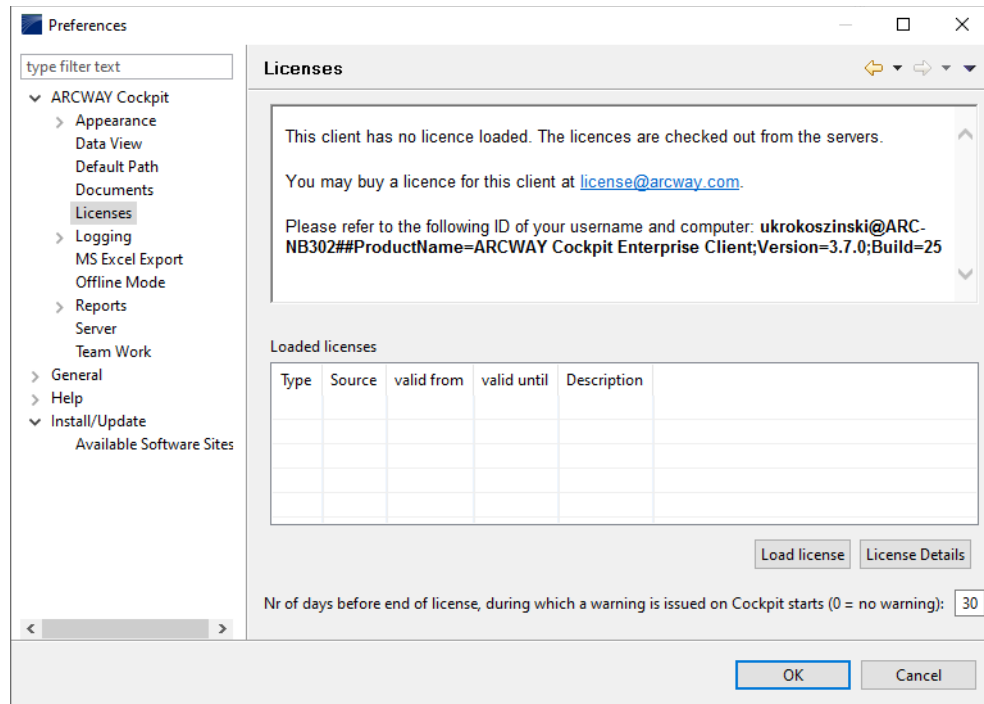


Figure 4: User defaults

In this dialog you can also load the license for your client. Use the button **Load license** for this purpose.

If you haven't purchased licenses yet or wish to purchase further licenses, please refer to sales@arcway.com or give us a call: +49 30 800 97 83 0

5.2 Setting up the server connection (Enterprise Edition only)

Das Einrichten der Serververbindung ist nur bei der Enterprise Edition erforderlich!

When you run **ARCWAY Cockpit** client for the first time, there are no servers configured. First you have to configure the server connection for this client.

New Serverconnection

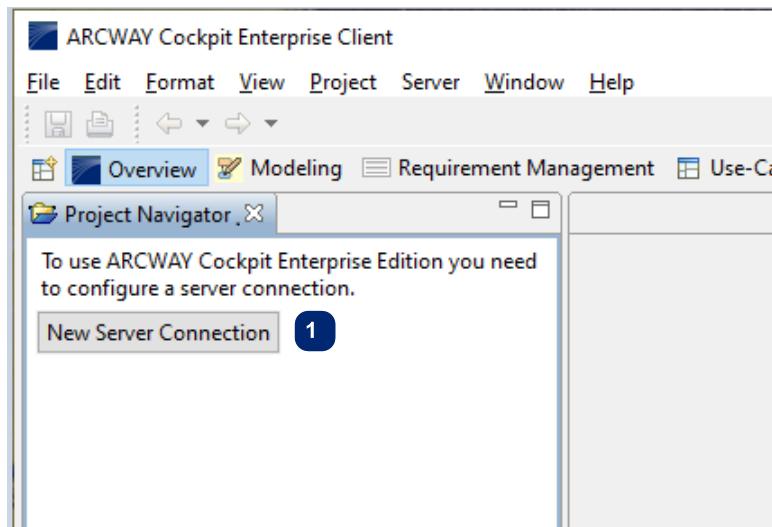


Figure 5: New Serverconnection

For creating a connection to a server click on the button **New Server** **1** **Connection** within the Project Navigator view. A dialog opens.

Sie erreichen diese Funktion ebenso über das Menü **Server » Hinzufügen....**

In dem darauffolgenden Dialog müssen verschiedene Eingaben für die Angabe des Servers getätigt werden:

Add Server

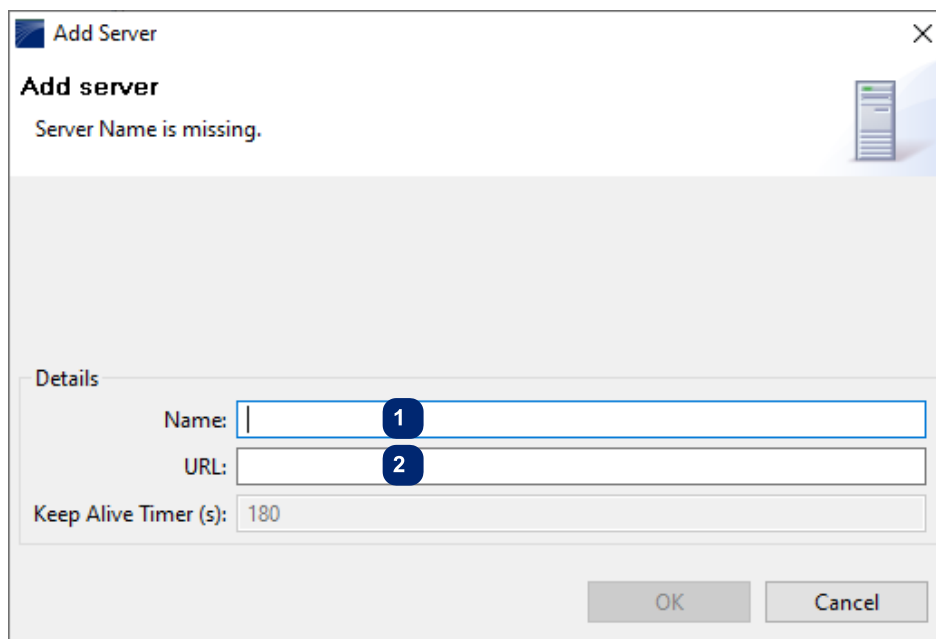


Figure 6: Add Server

- 1 Freely selectable server name, such as **Cockpit Server**.
- 2 Address of the server in the network (**http://...** or **https://...**).

As URL, you must enter the address at which the Cockpit server can be reached. If you do not know the URL of the server, please ask your system administrator.

When using a server of **ARCWAY AG** (use of the ARCWAY Cloud), please contact us via support@arcway.com or also by telephone under +49 30 800 97 83 300.

Repeat the last steps for each server you want to configure.

The installation is now complete and the machine is ready for operation.